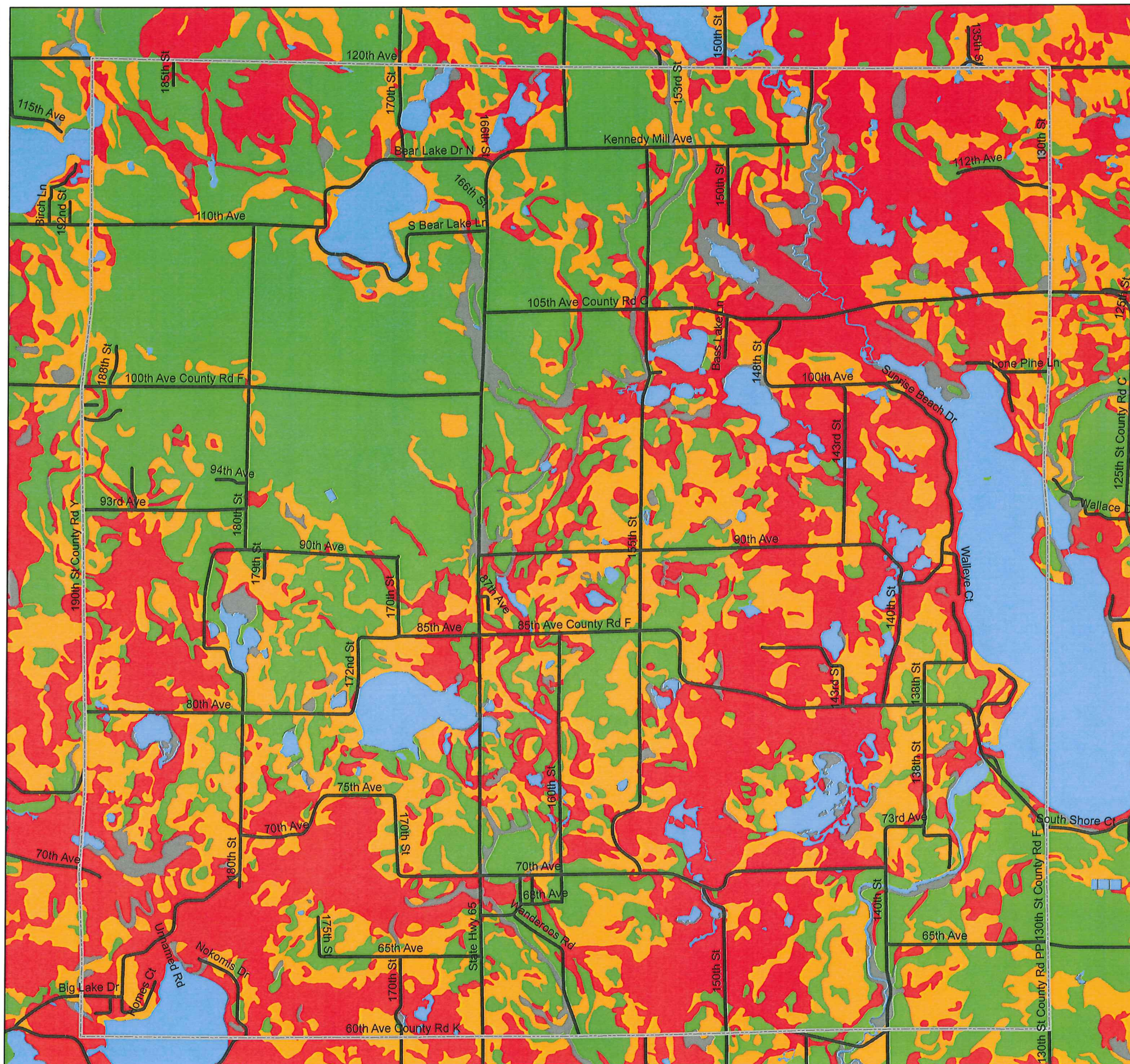


Town of Garfield, Polk County

Map #8 Soil Limitations



Legend

-  Town of Garfield
- Dwellings with Basements**
-  Not Rated
-  Not Limited
-  Somewhat Limited
-  Very Limited

Soil properties influence the development of building sites, including the selection of the site, the design of the structure, construction, performance after construction, and maintenance. The USDA Polk County Soil Survey identifies soil limitations for various types of buildings. These limitations are labeled as slight, moderate, and severe. The ratings for dwellings are based on the soil properties that affect the capacity of the soil to support a load without movement and on the properties that affect excavation and construction costs. The properties that affect the load-supporting capacity include depth to a water table, ponding, flooding, subsidence, linear extensibility (shrink-swell potential), and compressibility. The properties that affect the ease and amount of excavation include depth to a water table, ponding, flooding, slope, depth to bedrock or a cemented pan, hardness of bedrock or a cemented pan, and the amount and size of rock fragments.



Stevens
ENGINEERS · PLANNERS · SURVEYORS

1680 LIVINGSTONE ROAD
HUDSON, WISCONSIN
WWW.STEVENSENGINEERS.COM
715-386-5819
715-386-5879 FAX

December, 2007
Sources: Polk County Land Information, NRCS Soil Data Mart
Projection: Transverse Mercator